

Selena Dias

Main Category: Service children

What are the Characteristics of Service Children and how does their Performance at Key Stage 1 compare to their Peers?

Summary

This RAN looks at the characteristics and attainment of service children in comparison to other children at Key Stage 1.

Key Findings:

- The number of pupils identified as service children who undertook Key Stage 1 in 2008 was approximately 3273 (0.6% of the cohort).
- 4 % of the service children at Key Stage 1 live in the most deprived IDACI quartile and 55.9% live in the least deprived quartile.
- 75% of service children achieved at least a Level 2B in Maths compared to 79.9% of non service children. 71.7% of service children achieved at least a Level 2B in Reading & Writing compared to 71% of non service children.

Introduction

The service children field was included on the Annual School Census for the first time in 2008. The analysis uses data taken from the National Pupil Database for pupils in maintained mainstream schools in England. This note looks at pupil numbers, types of establishment attended, SEN status, English as an additional language status, FSM prevalence, IDACI quartile, identification of gifted and talented, ethnicity and levels of attainment of service children at Key Stage 1. For all of these factors service children are compared to all other children.

Pupil Numbers

The number of pupils identified as service children who undertook Key Stage 1 in 2008 was approximately 3273 (0.6% of the cohort).

Information to identify a pupil as having parents who are service personnel was refused in only a very small number of cases, approximately 128 for the KS1 cohort.

Type of Establishment

Over two thirds (68.4%) of service children who undertook KS1 assessment attended community schools. This was similar for non service children (67.3%).

14.3% of service children attended voluntary controlled schools as opposed to 10.2% of non service children.

11.4% of service children attended voluntary aided schools as opposed to 19.3% of non-service children.

FSM Eligibility

7.6% of service children were eligible for FSM at KS1. 15.0% of non service children were eligible for FSM at KS1.

English as an Additional Language

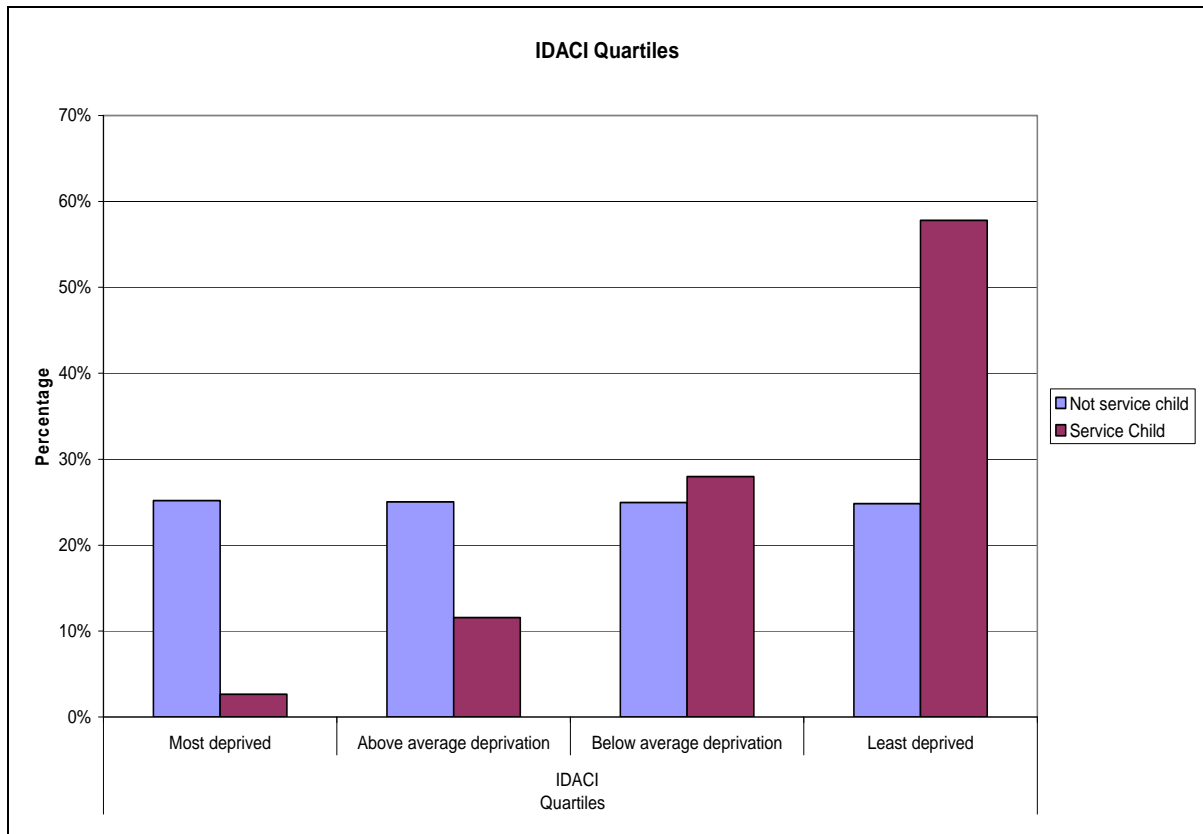
Service children are less likely to have English as an additional language than non-service children. Of the service children completing Key Stage 1, 3.5% had English as an additional language compared with 14.8% of non service children.

SEN Status

An almost equal proportion of service children were identified as SEN (20.6%) in comparison to 22.2% of non service children. Service children fell into each type of SEN (School Action, School Action Plus and Statement) in similar proportions to non service children.

IDACI Quartile

Based on pupil postcodes, around 55.9% of the service children in the Key Stage 1 cohort live in the least deprived IDACI quartile. 3.8% of the Key Stage 1 service children live in the most deprived IDACI quartile. 28.6% of service children live in areas of below average deprivation compared to 23.6% of non service children.



Gifted and Talented

Of the service children at Key Stage 1, 7.9% are identified as gifted and talented, and of the non service children 8.2% are considered gifted and talented.

Ethnicity

85.4% of service children were White British in comparison to 75.0% of non service children. There were very small numbers of service children from ethnic minority groups. The largest ethnic minority group (4.2%) for service children was "Any Other Asian Background". 1.2% of non service children fell into this same category.

Boarders

There were no service children who were boarders. Less than 0.5% of non service children were boarders. These low values may be due to the fact that children at Key Stage 1 children are quite young (aged 7).

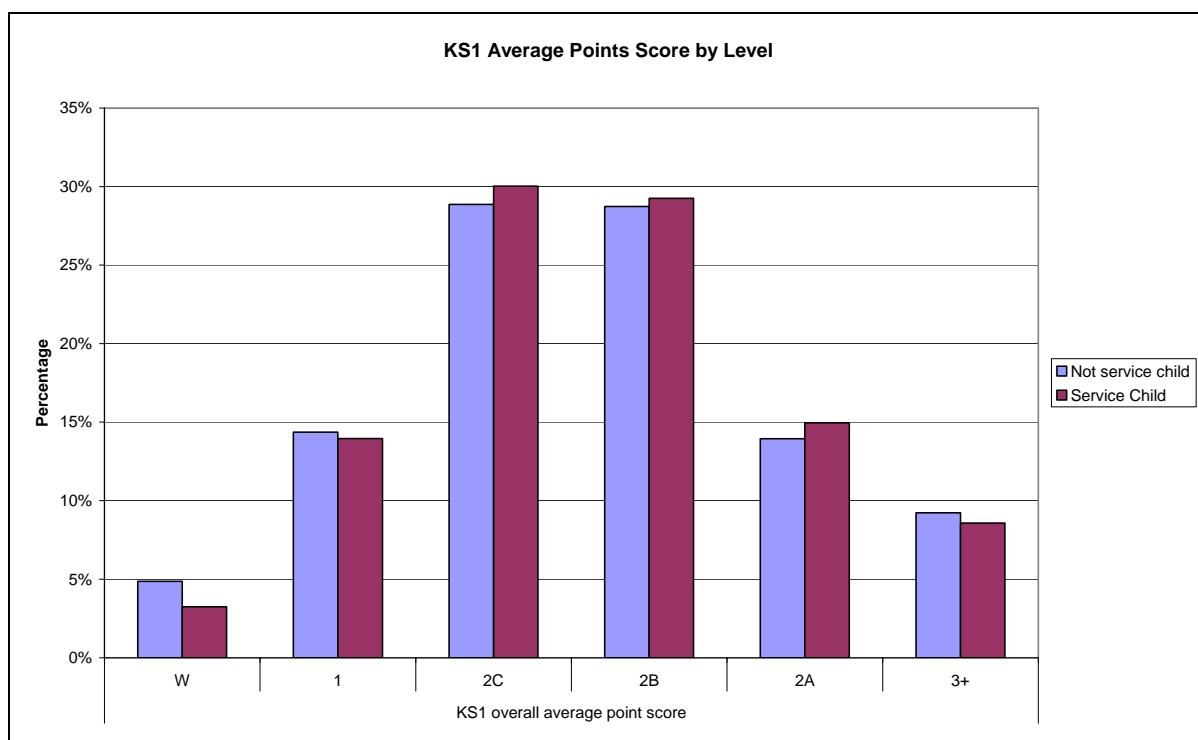
Attainment

- **Key Stage 1 National Curriculum Level Awarded according to Average Points Score**

The average points score (which only includes Reading, Writing, Maths and Overall Science) was aggregated to correspond to National Curriculum Levels (i.e. W, 1, 2C, 2B, 2A & 3 or more)

52.8% of service children achieved at least a Level 2B (the expected value at this stage) compared to 51.9% of non service children.

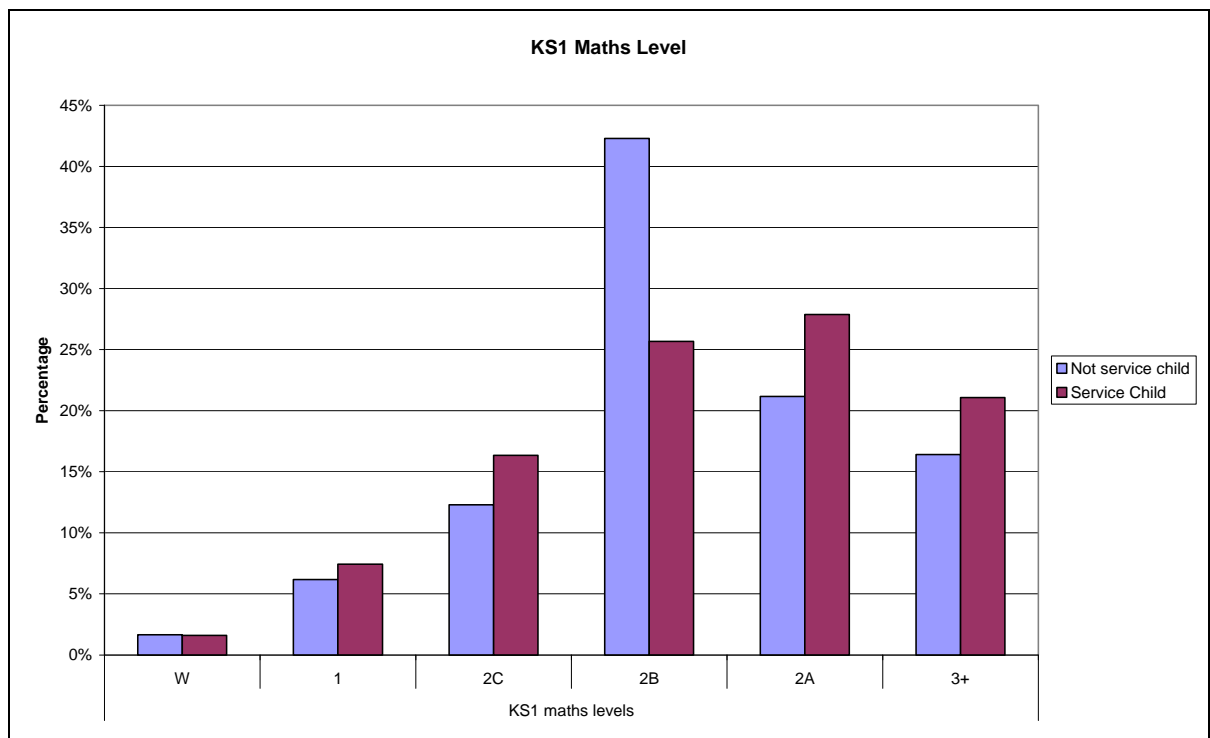
The distribution of levels among service children and non service children are very similar.



- **Key Stage 1 National Curriculum Level Awarded – Maths**

74.6% of service children achieved a level 2B (the expected value at this stage) compared to 79.9% of non service children.

16.4% of service children achieved a Level 2C (just below the expected level) compared to 12.3% of non service children. More service children achieve the highest level than non-service children.



- **Key Stage 1 National Curriculum Level Awarded – Reading & Writing**

71.7% of service children achieved at least a Level 2B in Reading & Writing compared to 70.9% of non service children.

27.0% of service children attained Level 3 or above compared to 25.8% of non service children.

18.8% of service children were working below the level of the test compared to 19.8% of non service children.

